

Olympic Delivery Authority

**Water recycling facility  
planning update**

December 2009



*Recycle*



---

The ODA is committed to the London 2012 Olympic and Paralympic Games being the greenest Games ever. As part of this commitment we are providing at least 40 per cent reduction in non-drinkable water and are maximising water recycling on the Olympic Park. To achieve this target we have teamed up with Thames Water to develop a new water recycling facility. We are submitting a planning application for this facility in early 2010.

---



Artist's impression of the facility from the main entrance

# Infrastructure

The Olympic Delivery Authority (ODA) and Thames Water are proposing to build a facility to recycle and clean water, providing 574 cubic metres per day of non-drinkable water for the Olympic Park. After the Games the facility will continue to provide water to the venues and infrastructure on the Park.

## How it works

The water recycling facility will take waste from the Northern Outfall tunnel that runs under The Greenway. The water extracted will be treated using the latest technology. Water will be filtered using carbon before being stored in a tank, then pumped into the Park via a dedicated water mains network.

The treated water could be used on the Olympic Park for:

- toilet flushing
- rainwater harvesting
- irrigating the parklands
- irrigating the fields of play within venues, such as in the Olympic Stadium
- cooling/heating for the Energy Centre.

The water recycling facility will consist of a number of tanks, filtration vessels, associated pumps and odour control units.

It will also house a small office and welfare facilities. Its innovative design means it will also be used for Thames Water's research and development programme, with facilities for visitors.

---

# 574

cubic metres of water will be recycled each day through the new facility

---



Artist's impression of the facility from the main entrance



Artist's impression aerial view of the facility buildings



Artist's impression of the view of the facility from The Greenway



## Location

The proposed water recycling facility will be located in the south-west corner of the Olympic Park. It will be close to the Northern Outfall tunnel, which runs under The Greenway.

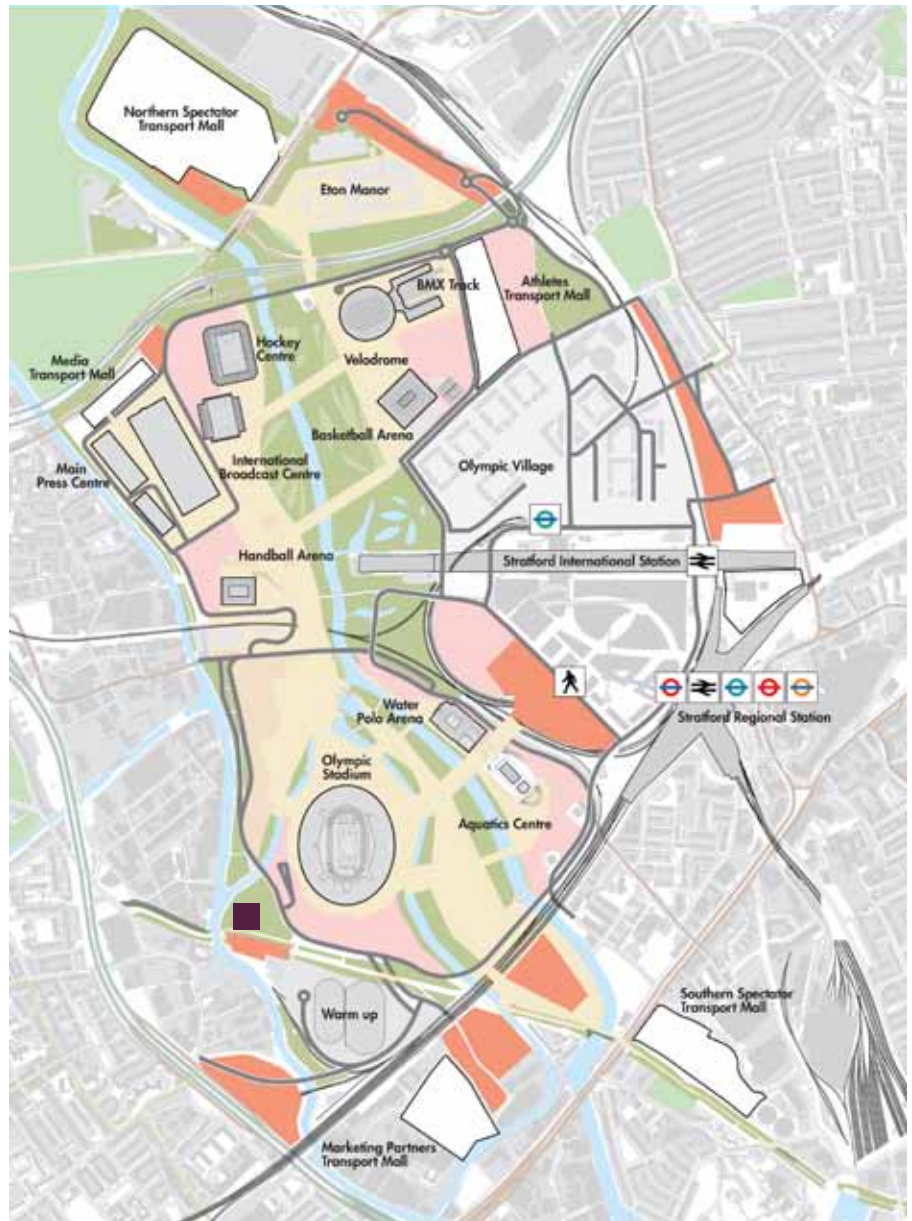
A number of sites were assessed before the site at Old Ford was identified as the only suitable location to build the facility ahead of the Games.

Old Ford is a site known for its ecological importance and is a designated nature reserve. The site also has a long history of uses associated with water, including a water treatment works. With this in mind an assessment will be submitted with the planning application measuring the possible impacts on the site. Any measures taken to reduce these impacts will be outlined in the planning application.

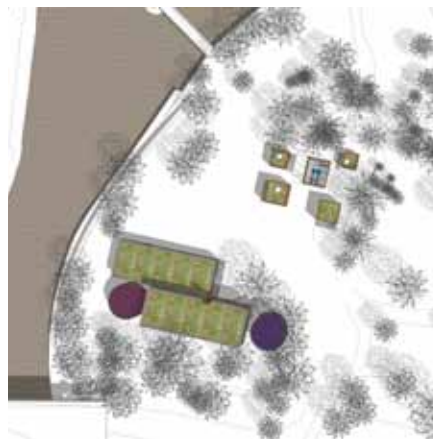
These measures will include:

- odour control;
- minimising the size of the facility;
- sustainability measures, including a 'green roof' creating habitats for wildlife;
- using natural colours and materials;
- landscaping; and
- enhancing ecological areas, such as replacing a log wall to create wildlife habitats.

The facility will be appropriately monitored by the local authorities.



■ Proposed site of the water recycling facility



Site plan

## Design

The proposed design for the water recycling facility is in keeping with the other utility buildings on the Olympic Park.

The design of the building is simple, small and functional with two blocks and two tanks. It will be screened from the surrounding area where suitable.

The proposed design uses sustainable materials that are easy to maintain. These include a green roof with 'London mix' wildflowers and environmentally sensitive materials including gabions – which are support structures usually made from a wire mesh cage and filled with stones – for the lower walls. Timber used on the facility will be Forest Stewardship Commission certified untreated timber boarding. The facility will use corten steel for the air-quality unit and doors. This is steel that has been weathered to blend in with the surrounding area.

## What's next?

A planning application for the water recycling facility will be submitted to the ODA Planning Decisions Team in early 2010. The planning authority will consult with local residents and businesses about the application.

An example of a gabion wall on the Olympic Park





Olympic Delivery Authority  
23rd Floor, One Churchill Place  
Canary Wharf, London E14 5LN  
Reception +44 (0)20 3 2012 000  
Fax +44 (0)20 3 2012 001  
london2012.com

---

This publication is available on request in other languages and formats. For a large print, easy read, Braille, Word or audio version please email [enquiries@london2012.com](mailto:enquiries@london2012.com) or phone 0808 100 2012 and quote reference ODA 2009/325

This document can be found in the publications section of [london2012.com](http://london2012.com)

---

- |  |   |
|--|---|
| – Please phone for a free translation                  | – Prosimy zadzwonić w celu uzyskania bezpłatnego tłumaczenia. |
| – Ju lutemi telefononi për përkthime falas             | – Por favor telefone para obter uma tradução gratuita         |
| – رجاءً اتصل بنا للحصول على ترجمة مجانية               | – ਮੁਫਤ ਅਨੁਵਾਦ ਵਾਸਤੇ ਕਿਰਪਾ ਕਰਕੇ ਫ਼ੋਨ ਕਰੋ                       |
| – বিনামূল্যে অনুবাদের জন্য অনুগ্রহ পূর্বক টেলিফোন করুন | – Fadlan soo wac tarjumaad lacag la'aan ah                    |
| – 請致電要求免費翻譯  | – Llámenos para conseguir una traducción gratuita             |
| – 請打电话要求免費翻譯   | – براہ مہربانی مفت ترجمے کے لیے فون کریں                      |
| – Téléphonez pour obtenir une traduction gratuite      | – Lütfen ücretsiz çeviri için arayın                          |
| – মফত আখ্যাতর মাটে মওরআনী করীনে ফোন করো.               | – xin gọi điện để được dịch miễn phí                          |
- 

The construction of the venues and infrastructure of the London 2012 Games is funded by the National Lottery through the Olympic Lottery Distributor, The Department for Culture, Media and Sport, the Mayor of London and the London Development Agency.

© 2009 Olympic Delivery Authority

The official Emblems of the London 2012 Games are © London Organising Committee of the Olympic Games and Paralympic Games Ltd (LOCOG) 2007. All rights reserved.

Reference number ODA 2009/325. Published December 2009.



department for  
culture, media  
and sport



**MAYOR OF LONDON**