

Your Park



**Round two for
Construction Crew**
Page 3

Olympic Park Royal visitor
Page 4

Snapshot of 2009
Pages 6–7

Progress on the Park
Page 8–11

Welcome

Welcome to this issue of 'Your Park'



Julie King
Head of External Relations
Olympic Delivery Authority

The Olympic Park has undergone a transformation in 2009, with construction well underway on major venues and planning permission for all permanent venues now secured.

Some of you might have seen this progress during our third Open House event in September, when we took 4,000 people around the Park.

The new members in our Construction Crew programme have also been getting a good look at the Park's transformation. Forty children from local schools are taking part in our second programme to learn more about the Olympic Park. They even met Her Majesty The Queen during her visit to the Park last month, where she helped to plant the first of the 4,000 trees that will create green spaces and parklands (see page 4).

We are pleased to report that our first tour guides from the local area have

started hosting tours of the Park after completing their qualification and training (see page 15).

Projects of this size are not without challenges. We know that some of you are experiencing noise, dust and other impacts as a result of our work and we are working hard with you and our contractors to minimise this.

We have set up meetings so local people can directly speak with us and contractors about their concerns. We are also working hard to keep local people informed about any road diversions or changes that relate to our construction programme.

Olympic Park venues are fast becoming London landmarks, but we still have a long way to go. Our construction programme will be at its peak next year and we are committed to staying in contact and working with local people during this busy time ahead.



On the cover

Her Majesty the Queen is greeted at the Olympic Park by the ODA's Construction Crew.

Olympic Park closure

There will be no work taking place over the Christmas period on the Olympic Park from Thursday 24 December to Monday 4 January 2010.

Round two for Construction Crew

New Construction Crew members get involved in London 2012



Construction Crew members meet Mayor of London Boris Johnson at a London 2012 exhibition in City Hall, home of the Greater London Authority

The 40 local schoolchildren taking part in the Olympic Delivery Authority's (ODA's) second 'Construction Crew' programme had their first taste of life on the Olympic Park this autumn.

The children, aged ten and from 20 schools within the five Host Boroughs, will see progress across the Park over this year and learn skills in leadership, responsibility and presentation.

They are then encouraged to use their new skills to share what they have learned with their schoolmates.

After an introductory two-day workshop, the Crew visited the Park to discover its history and

archaeology. The children also learned about London 2012's key themes of environment and sustainability.

One of the highlights so far for the Crew was meeting Her Majesty The Queen during her visit to the Olympic Park in November (see page 4).

Next year the Crew will find out how the ODA is bringing new employment opportunities and skills to their local area, while another session will focus on leadership. The Crew will graduate from the programme in June 2010. The Construction Crew project was first run last year with 20 children, who continue to be involved with London 2012. They recently celebrated

their graduation and discussed the 2012 Games with Prime Minister Gordon Brown, Olympics Minister Tessa Jowell, Shadow Olympics and Sports Minister Hugh Robertson and Olympic Triple Jump champion Jonathan Edwards.

'The children, aged ten and from 20 schools within the five Host Boroughs, will see progress across the Park over this year and learn skills in leadership, responsibility and presentation.'

Olympic Park Royal visitor

Her Majesty The Queen visits the Olympic Park

Her Majesty The Queen visited the Olympic Park in November, where she met site workers and helped to plant the first of more than 4,000 trees that will create the parklands and green spaces for the Park and Olympic Village.

The Queen helped to plant a 17-year-old English white willow close to the Olympic Stadium. A total of 300 trees will be located on the Stadium 'island', half of which will be planted by the end of this year.

After viewing the Olympic Stadium from a platform at the level of the highest spectators' seats, The Queen walked along a section of the 100m track and across what will become the finish line.

ODA Chairman John Armitt said: 'It is an honour to welcome Her Majesty The Queen to the Olympic Park and show her the progress that is being made across the site.'



Seb Coe shows Her Majesty The Queen where the 100m track will be in the Olympic Stadium

'We now have around 7,000 people working to create the venues that are already landmarks on the east London skyline and thousands of UK companies working on one of the largest regeneration projects in Europe.'

'The Queen met site workers and helped to plant the first of more than 4,000 trees'

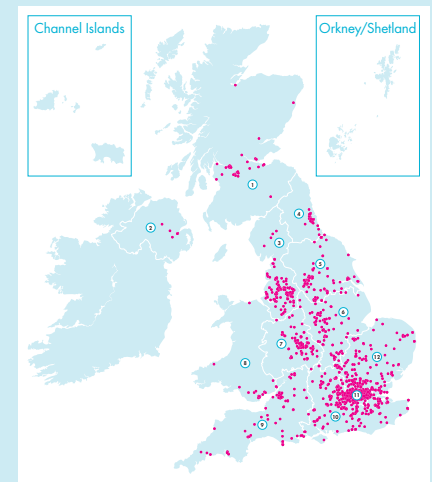
Local businesses help build the Games

Local companies are benefiting from the London 2012 Games. More than 140 businesses from within the five Host Boroughs have already won work supplying goods and services to the Olympic Delivery Authority (ODA). For example, a Leyton-based business has won a contract to provide skips to the contractor working on the Aquatics Centre.

Businesses from all around the UK are also winning London 2012 related contracts.

A new 'building for 2012' map, recently published by the ODA, shows a snapshot of around 1,500 companies spread across the UK that have won contracts with the ODA and its supply chain.

The map can be downloaded from london2012.com/suppliers



New Apprentice Centre opens

A new Apprentice Centre, which opened on the Olympic Park in November 2009, is working with the five Host Borough job networks to find local candidates for London 2012 apprenticeship opportunities.

The Centre also provides a place where apprentices already on the Park can catch up and talk about their roles, or use the Centre's IT equipment.

A total of 120 apprentices are now working on the London 2012 programme. The Olympic Delivery Authority has a target of 350 apprentices to be employed throughout the programme.

Contact: Lucy Coppin,
lucy.coppin@london2012.com,
020 3288 5682



Case study

Catherine Neary is a first-year plumbing apprentice taking part in the London 2012 apprenticeship programme. The programme has allowed her to add practical experience towards achieving her qualification of NVQ Level 2.

The London 2012 Women into Construction Project team visited the college where Catherine was training and matched her to a plumbing apprenticeship.

'I know now that I want to be a plumber and need my qualification to get on,' Catherine said. 'I know that I am training for a very good job and this experience on site is great for my CV.'

For more details on London 2012 training opportunities, call your local borough referral agency

Hackney
On-site: **020 7923 3222**

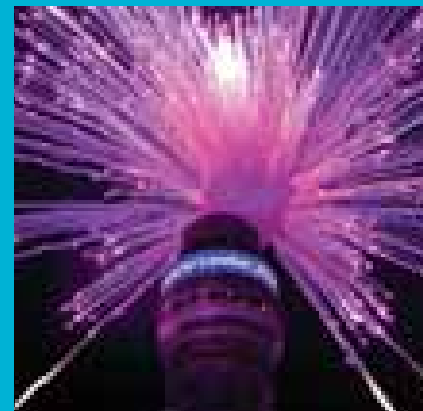
Newham
Workplace: **020 8430 4331**

Tower Hamlets
Skillsmatch: **020 7364 3727**

Waltham Forest
Worknet: **0845 604 2012**

Greenwich
Greenwich Local Labour and Business: **020 8858 7792**

1,000 days countdown begins



The BT Tower, which now shows a countdown of the number of days to go to the Games, lights up the skyline

The London skyline was flooded with colour as London 2012 celebrated '1,000 days to go' to the Opening Ceremony of the Olympic Games.

Millions watched a live broadcast during the National Lottery Draw on 31 October that showed the stunning fireworks display from the BT Tower, one of the city's most iconic landmarks.

The London Organising Committee of the Olympic Games and Paralympic Games also launched a Games-themed photographic exhibition in association with Tier One Partner BT at the National Portrait Gallery. The exhibition features the people across the UK – both high-profile and behind the scenes – who are making the Games happen.

A total of 100 portraits will be taken between now and 2012. They will be displayed each summer and used in a final exhibition during the Games.

Snapshot of 2009



Coin winner Florence Jackson, 9, shows off the 50p coin she designed as part of a Royal Mint collection celebrating the London 2012 Games. Florence's drawing of a high jumper beat 17,000 other entries in a Blue Peter competition to create the first of 29 coins to be designed by the public.



Education logo Graphic design student Reiss Evans, 18, beat 150 other entries from young designers to win the London 2012 Education logo design competition. The logo will be awarded to schools and colleges that show a commitment to the Olympic and Paralympic Values.



Health and safety workshops

Thousands of children from 40 schools near the Olympic Park take part in the Olympic Delivery Authority's (ODA's) second health and safety educational programme. They learned how to stay safe near construction sites through the fun, drama-based workshops.

Pictograms Team GB athletes wear t-shirts displaying the London 2012 Olympic pictograms, which were unveiled at Stratford Regional Station in October. The pictograms represent each of the Olympic and Paralympic sports and will be used in different ways, including on merchandise, posters and signs.



Olympic Park Engagement Network (OPEN) Local community stakeholders visit the Aquatics Centre as part of the biannual OPEN Meeting.



Toys Hornby plc is developing the first range of Christmas gifts associated with the London 2012 Games. They include this replica of the red London bus, which featured in the handover to London during the Closing Ceremony of the Beijing 2008 Games.



Open House More than 4,000 members of the public went on a guided bus tour of the Olympic Park during the Olympic Delivery Authority's third Open House event in September. Track and field gold medalists Sally Gunnell and Tessa Sanderson were there.



Webcam fly This fly was spotted by the London 2012 webcams buzzing around the Olympic Stadium site. The webcams let you be the fly on the wall and watch progress on Olympic Park venues as it happens. Visit london2012.com/webcams



Velodream winners Students from Curwen Primary School in Newham, winners of last year's London 2012 'VeloDream' competition, build their own cycling hub with help from the designers and builders of the London 2012 Velodrome.

Progress on the Park

1 Olympic Stadium **Construction began May 2008**

The external structure is now complete with all of the steel sections for the roof support and terracing units in place. The cable roof will be lifted into place at the end of the year and lighting towers are being assembled on site and will be installed in early 2010. The 700 internal rooms inside the Stadium are being fitted out.

2 Aquatics Centre **Construction began July 2008**

The Aquatics Centre roof, which weighs more than 3,000 tonnes, has been lifted off its temporary supports and lowered into its final position. The wave-like roof structure now sits on just three permanent concrete supports.

3 Velodrome **Construction began in March 2009**

The first lower-tier seating steel and concrete terracing units have been installed. Work to lift into place the steelwork that will form the roof and support the upper tiers of seating will be completed by the end of the year. The cable net roof will be in place by spring 2010, with the venue fully covered by the summer. The structure of the 360-degree concourse level, which will divide the upper- and lower-level seating, has been completed.

4 Olympic Village **Construction began in May 2008**

The structure of the Village's first residential blocks is now complete and the remaining ten are due to be finished by summer 2010. Earthworks have started on the Chobham Academy site, which will be a world-class education campus. Major infrastructure works, including utilities, tunnels and bridges, are also on track to be completed by summer 2010.

5 International Broadcast Centre/Main Press Centre (IBC/MPC) **Construction began in April 2009**

The 4,500-tonne steel structure of the International Broadcast Centre was completed in just 10 weeks. The roof lining, flooring and cladding is almost complete. The structure for the Main Press Centre has started coming out the ground.

6 Handball Arena **Construction began in July 2009**

Foundations are due for completion in late 2009 and the structure will start to come out of the ground in early 2010.

7 Basketball Arena **Construction began in October 2009**

Preliminary work to prepare the site for construction has started, with work on the main Basketball Arena structure due to begin in spring 2010.









8 Eton Manor

Planning permission secured in October 2009

Work will begin on the multi-use Eton Manor venue in spring 2010.

9 Primary Substation

The Primary Substation that will help to supply electricity to the Olympic Park and the new Stratford City development was switched on in October 2009. It was the first Olympic Park building to be completed.

10 Energy Centre

The steel frame and concrete floors for the Energy Centre, which will provide clean and sustainable electricity and heating for Olympic Park venues, are complete.

11 Parklands

The development of the Olympic Park's green spaces and parklands has begun with the planting of the first of around 4,000 trees. More than 300,000 wetland plants are being grown in Norfolk and will be planted in the Park from spring 2010.

12 Bridges

Construction work is underway on 21 of the 30 new Olympic Park bridges. Decks are in place for the 250m-long and 40m-wide footbridge, which will be the main entry point to the Park. All five bridges connecting the Olympic Stadium 'island site' to the surrounding area have been lifted into place.

13 Stratford Regional Station

The floor and roof panels of the new upper-level entrance are now in place and passengers are already using the first of the new lifts. (Not shown, to the right of the Stratford City development)

14 Stratford International Station

The new high-speed domestic service from Kent to Stratford International Station is starting in mid-December 2009.

15 Stratford City development

The development will provide 1.25 million sq m of retail, leisure and entertainment facilities, offices, hotels, housing, community facilities and landscaped public spaces.

16 Viewtube

A community centre part funded by the ODA, and run by Leaside Regeneration which provides a fully accessible café and viewing spaces of the Olympic Park, as well as putting on a range of education, arts and ecology activities.

Early benefits for Stratford passengers

Work at the front of Stratford station moves ahead



An artist's impression of the front of Stratford Station following the ODA's improvements

New hoardings have been put up at the front of Stratford Regional Station by the company building the new shopping development so it can complete work on the Town Centre Link bridge.

The bridge will take passengers from Meridian Square at the front of the station over the railway to the new development and on to the Olympic Park. Work has started to build the 'southern steps' that connect Meridian Square to the bridge. As part of this work, the countdown clock has been temporarily moved to a new location in the town centre to clear the area for construction.

The Olympic Delivery Authority's (ODA's) work to boost capacity and accessibility at the station is also moving ahead. Two new lifts are now in service and the new canopies on platforms (3/5 and 6/8) are in place and providing shelter for passengers.

The new westbound Central Line platform that will allow passengers to get on and off these services from both sides of the train is taking shape, as are the several new wider staircases being installed.

Work on the new upper-level station entrance is progressing, with floors and roof panels in place. The new entrance

will allow people leaving the Olympic Park to bypass the subways via the Town Centre Link bridge and directly access services towards London.

A bus link from Stratford Station is now available for passengers wanting to travel to Stratford International Station and use the new high-speed services to Kent.

'Work has started to build the 'southern steps' that connect Meridian Square to the bridge'

Green light for new community sports hub

All permanent Olympic Park venues have received planning permission following the approval of the Olympic Delivery Authority's (ODA's) plans for Eton Manor.

During the London 2012 Olympic and Paralympic Games, Eton Manor will feature three 50m swimming pools, a synchronised swimming pool and a water polo pool that will be used by athletes for training.

It will also be the venue for Wheelchair Tennis during the Paralympic Games.

After the Games, Eton Manor will become a mixed-use sports facility for the local community. It will include a hockey centre with two competition pitches, a tennis centre with four indoor and six outdoor courts and five-a-side football pitches. The mountain bike trails forming

part of the VeloPark will also extend to Eton Manor.

The venue has been designed to be easily transformed after the Games when its sports and leisure facilities will be owned, operated and funded by the Lee Valley Regional Park Authority (LVRPA).

The ODA consulted on plans for Eton Manor during the autumn. Consultation included three drop-in sessions and two public displays. The ODA also ran a multi-faith workshop, and workshops for sport participants and parents with young children.

Towards the end of this year, the ODA also consulted local residents on planned improvements to Wick Lane and the proposals for how the Olympic Park's parklands and green spaces will be developed after the Games.



Eton Manor will host Wheelchair Tennis during the Paralympic Games

Eton Manor athletes remembered



Eton Manor Old Boys' Club members are given access to the Olympic Park construction site to lay a wreath every year at the memorial

Members of the Eton Manor Old Boys' Club visited the Olympic Park to lay a Remembrance Day wreath at the war memorial at Eton Manor in memory of its members who died in the First and Second World Wars.

The memorial is being restored and will be relocated within the Eton Manor development in the north of the Park.

The Eton Manor Sports Club used the community sporting facilities that were on the site from the early 1900s. By the 1950s the club had gained a reputation as an elite sporting association and boasted Olympic medal-winning boxers among its members. The new facilities being built on site are set to continue this tradition.

Local landmarks chosen for pin badges

Londoners have chosen their favourite landmarks to be featured in a set of London 2012 pin badges that represent each of the City's boroughs.

The London 2012 Organising Committee of the Olympic Games and Paralympic Games (LOCOG) and London Councils announced the landmarks in October following a public vote.

Winning landmarks range from visitor attractions, theatres and museums to windmills, clock towers and bridges. Each landmark lends itself well to being re-created as a metal badge alongside the London 2012 logo. The badges will go on



Greenwich, Old Royal Observatory

sale early next year following the unveiling of the final designs.

LOCOG Chair Sebastian Coe said: 'The landmarks chosen by the public for the pin set showcase



Waltham Forest, Waltham Forest Town Hall

what Londoners want the world to remember about their borough.'

Designs will be unveiled early next year by London 2012 and London Councils.

Five Host Borough winning landmarks

Hackney	Hackney Empire
Newham	Three Mills
Tower Hamlets	Tower of London
Waltham Forest	Waltham Forest Town Hall
Greenwich	Old Royal Observatory



Hackney, Hackney Empire



Newham, Three Mills



Tower Hamlets, Tower of London

Local people start work as Olympic Park tour guides



Local people graduate from the Olympic Park tour guiding course, which also taught them skills that they can use in future employment and training

Eleven people from the five Host Boroughs have graduated from a six-week training course to become employed Olympic Park tour guides.

As well as hosting tours this autumn, participants had to prove their knowledge of key London 2012 themes to achieve the qualification.

Course topics covered the regeneration of east London, sustainability and design, venues and the long-term benefits of the Games. There was also a one-day communication seminar and practical sessions on guiding on the Park.

Participants sat a written and practical examination to gain their Level 2 Qualification from the Institute of Tourist Guiding.

Training, which was funded by the Host Borough Unit, included a series of evening lectures from staff at the Olympic Delivery Authority (ODA), London Organising Committee of the Olympic Games and Paralympic Games and the London Development Agency.

The ODA has taken 40,000 visitors around the Olympic Park so far. Regular tours, on selected weekdays and every weekend, are being held for local people.

To book a place, call **0300 2012 001** 9am-5.30pm, Monday to Friday. Bookings can be made up to three months in advance.

New DLR trains arrive

The 22 new Docklands Light Railway (DLR) railcars being co-funded by the Olympic Delivery Authority (ODA) have arrived at Stratford Regional Station and are being used by east London passengers. They will help to boost capacity across the DLR network by allowing it to run three-car instead of two-car trains from early 2010 and during the Games.

Young people get a taste of working life

Young local people are being given a taste of working life and the London 2012 Games through work experience and placements on the Olympic Park and at London 2012 headquarters. Work experience opportunities are for 15-16 year olds and run for one or two weeks. Work placements are given to school leavers or graduates for up to a year. Participants get to experience working in mainly office-based roles across a range of departments, from procurement to design.

London 2012 venue update

The Olympic Board has confirmed the Royal Artillery Barracks at Woolwich as the venue for Olympic and Paralympic Shooting and the preferred venue for Paralympic Archery. A planning application has been submitted for the temporary work needed to prepare it for the London 2012 Games.

The Board also agreed to the proposal to use existing facilities at Wembley Arena to host the Rhythmic Gymnastics and Badminton competitions rather than build a temporary venue on the North Greenwich Peninsula. This is subject to approval from the International Badminton and Rhythmic Gymnastics Federations.

Olympic Delivery Authority
23rd floor, One Churchill Place
Canary Wharf, London E14 5LN
Reception +44 (0)20 3 2012 000
Fax +44 (0)20 3 2012 001
london2012.com

This publication is available on request in other languages and formats. For a large print, easy read, Braille, Word or audio version please email enquiries@london2012.com or phone 0808 100 2012 and quote reference ODA 2009/245

This document can be found in the publications section of london2012.com

Please phone for a free translation

Ju lutemi telefononi për përkthime falas

رجاءً اتصل بنا للحصول على ترجمة مجانية

বিনামূল্যে অনুবাদের জন্য অনুগ্রহ পূর্বক টেলিফোন করুন

請致電要求免費翻譯

请打电话要求免费翻译

Téléphonez pour obtenir une traduction gratuite

મફત ભાષાંતર માટે મહેરબાની કરીને ફોન કરો.

Prosimy zadzwonić w celu uzyskania bezpłatnego tłumaczenia.

Por favor telefone para obter uma tradução gratuita

મુફત અનુવાદ વાસતે કિરપા કરકે ફોન કરો

Fadlan soo wac tarjumaad lacag la'aan ah

Llámenos para conseguir una traducción gratuita

براہ مہربانی مفت ترجمے کے لیے فون کریں

Lütfen ücretsiz çeviri için arayın

xin gọi điện để được dịch miễn phí

© 2009 Olympic Delivery Authority. The official Emblems of the London 2012 Games are © London Organising Committee of the Olympic Games and Paralympic Games Limited (LOCOG) 2007. All rights reserved.

The construction of the venues and infrastructure of the London 2012 Games is funded by the National Lottery through the Olympic Lottery Distributor, the Department for Culture, Media and Sport, the Mayor of London and the London Development Agency.

This document is printed at an environmentally aware ISO14001-certified printer on recycled paper. Published December 2009.



MAYOR OF LONDON

