

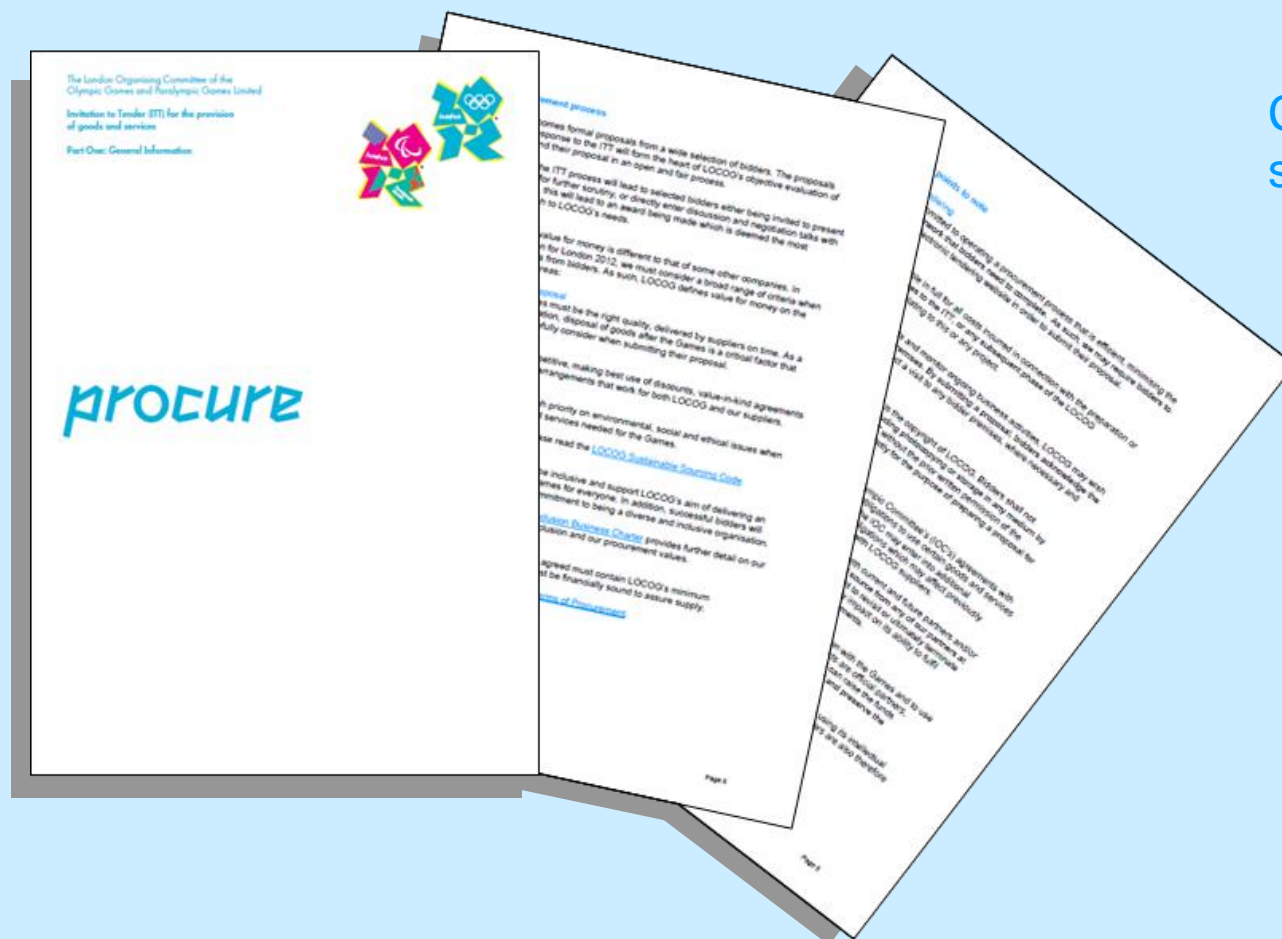
# London Organising Committee of the Olympic Games and Paralympic Games Ltd (LOCOG)

## Schedule of future CompeteFor opportunities

Period Covered: December 2010 – July 2011  
Published: December 2010



# Prospective suppliers are encouraged to read our Invitation to Tender (ITT) Part 1 – General Information



Contains the following sections:

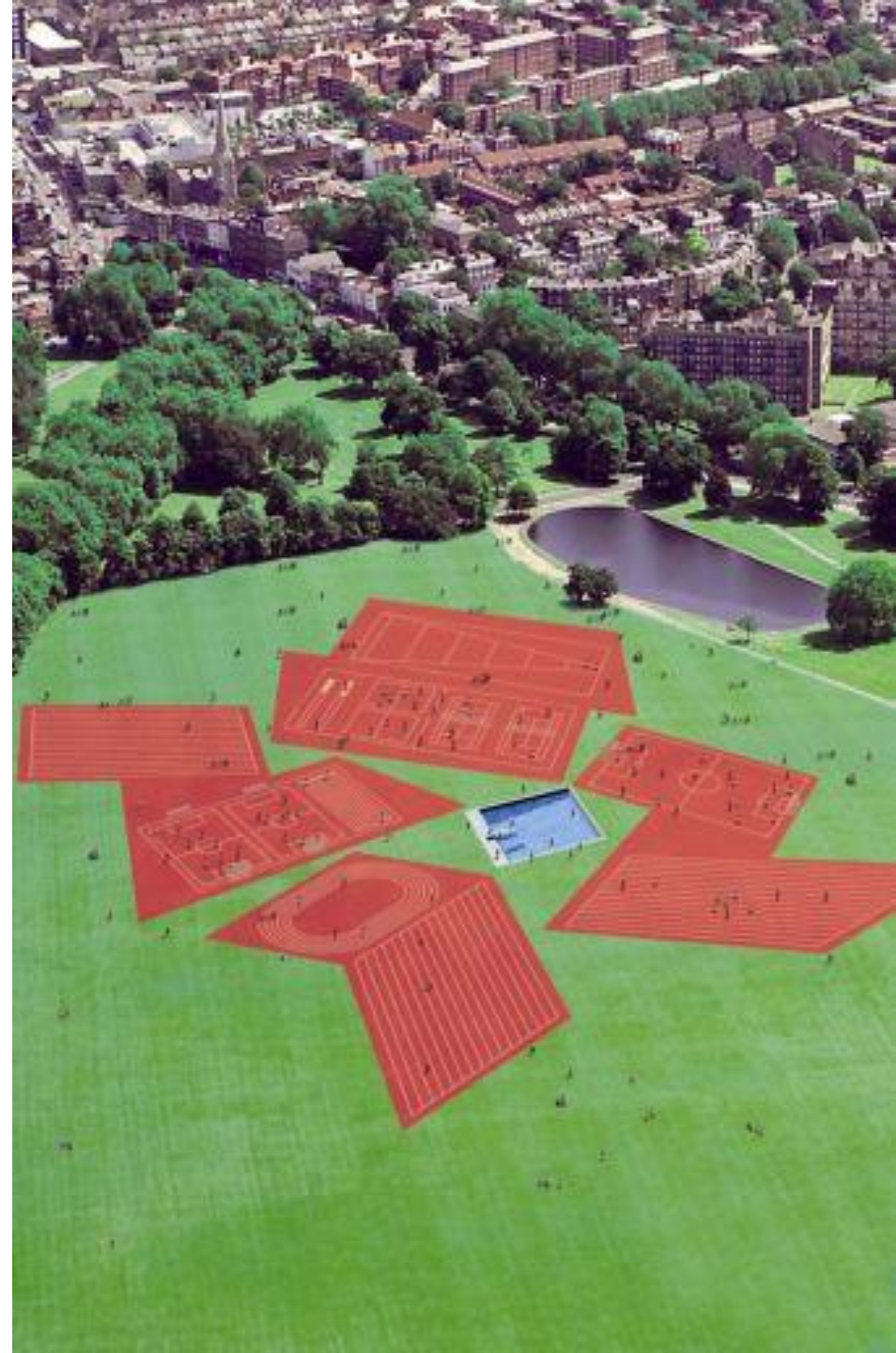
- Introduction to LOCOG
- The procurement process
- CompeteFor
- Confidentiality
- Other key points to note

Available from the London 2012 Business Network <http://www.london2012.com/business>

Download the 'ITT Part 1 – General Information' <http://www.london2012.com/ITT1>

Our procurement opportunities are divided across eight categories

<b>Artists, Performance &amp; Events</b>	<b>Sports (incl. Medical)</b>
<b>Security</b>	<b>Technology</b>
<b>Services</b>	<b>Transport &amp; Logistics</b>
<b>Facilities Management &amp; Catering</b>	<b>Venues &amp; Infrastructure</b>





# Artists, Performance & Events

## Dec – Feb 2010

Podiums

Flowers

Medal trays

## Mar - Jul 2011

Collectibles and awards

Professional Artists & Performances

Festival 2012 Totems

Stadium Wrap

Cultural Events



# Facilities Management & Catering

**Dec – Feb 2010**

Temporary Kitchens

**Mar - Jul 2011**

Catering equipment





# Security

**Dec - Feb 2010**

To be advised

**Mar - Jul 2011**

Security Contracts Audit  
Security Seals



# Services

## **Dec - Feb 2010**

Artwork production for Advertising

## **Mar - Jul 2011**

Workforce training venue (large)  
Training Delivery & Materials



# Sports

## Dec - Feb 2010

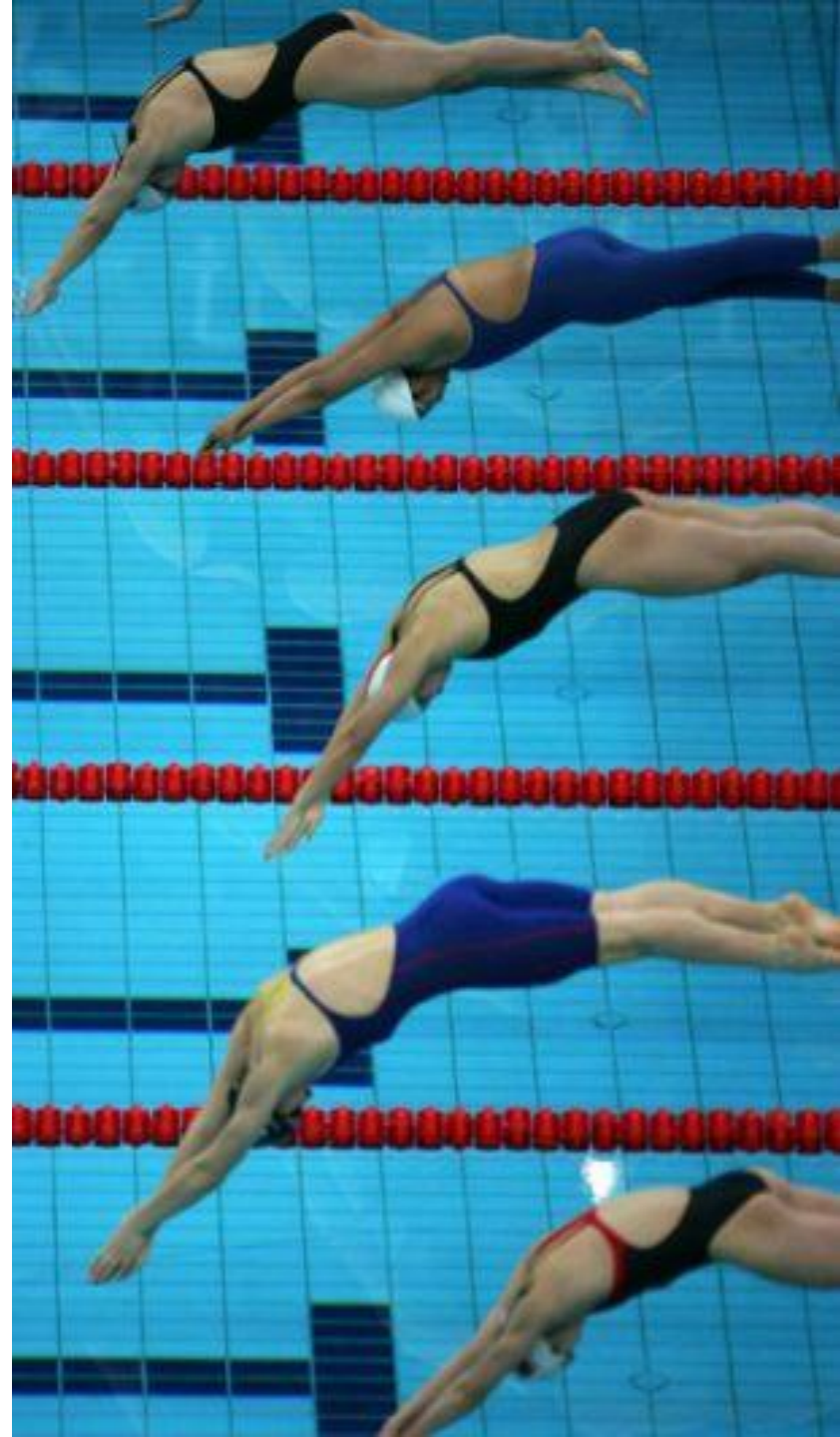
Athlete Boats Rowing  
Numbers, bibs, stickers  
Show Jumps  
Scoreboards / Charts  
Cycling equipment  
ICE Supply

## Mar - Apr 2011

Sailing Equipment  
Canoe Equipment  
Swimming Pool  
Equipment  
Alcohol test units  
Athletics equipment  
Whistles  
Fencing Equipment

## Jun - Jul 2011

Sport specific flags  
Consumables  
Coolers / Refrigerators  
Triathlon Equipment  
Equestrian Show jumps  
Marine Fuel  
Equestrian Equipment





# Sports – Medical

Jan - May 2011

Podiatry

Dental equipment and consumables

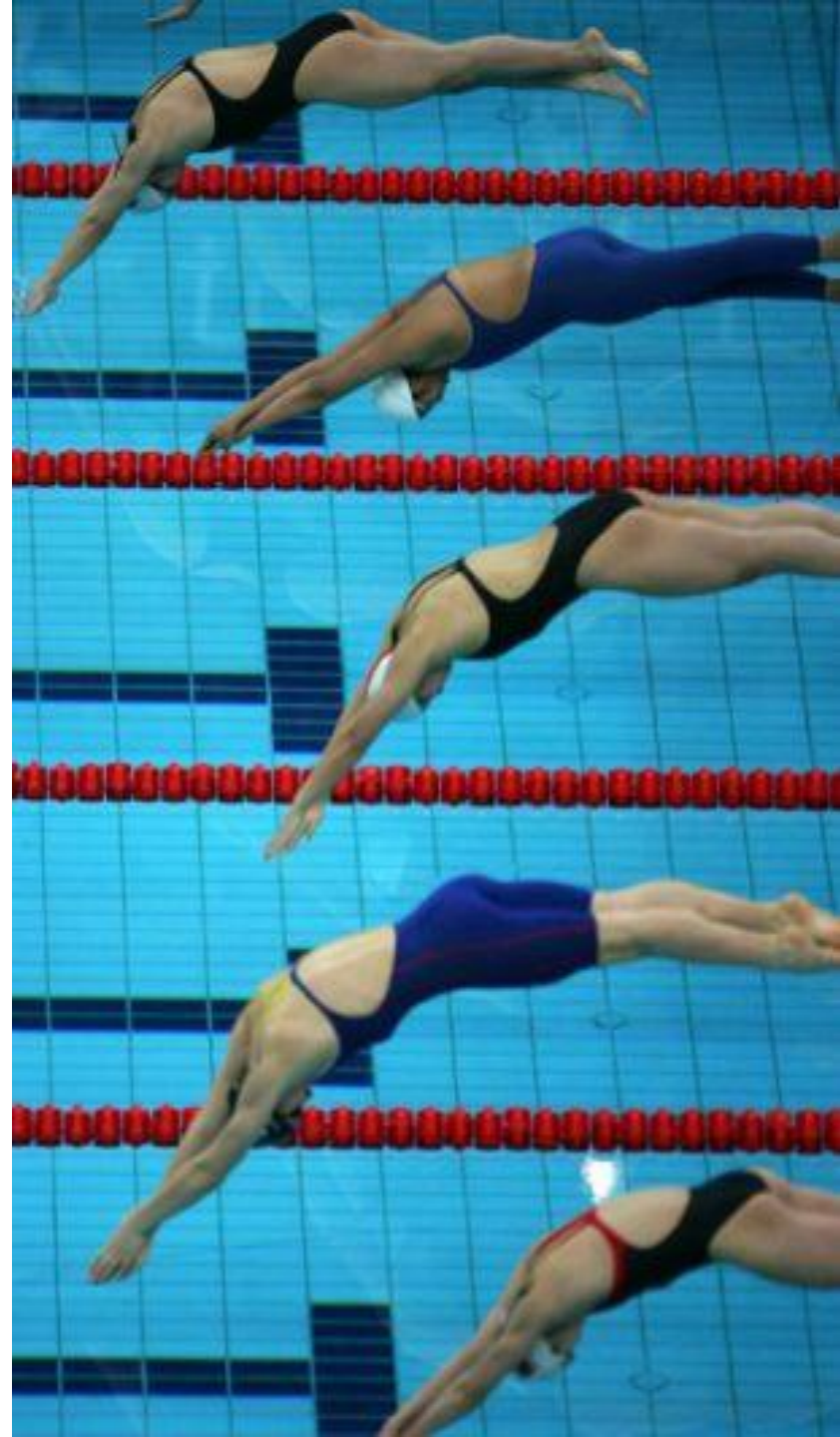
Plaster

Laboratory

Weymouth and Football Venues

Optometry

Medical Gases



# Technology

**Dec - Feb 2011**

IT Reseller Agreement

**Mar - Jul 2011**

To be advised



# Transport & Logistics

**Dec - Feb 2011**

Mobility vehicles

Village Blinds & Curtains

General Tools & Equipment

Material Handling Equipment

Driving Licence Checks

Driver Training – Fleet vehicles

Driver Scheduling & Rostering

**Mar - Jul 2011**

Press Centre furniture & fit-out

Traffic Management Consultancy

Vehicle Livery & Graphics





# Venues & Infrastructure

**Dec - Feb 2011**

Technology Support Structures  
Potable Water & Waste

**Mar - Jul 2011**

Alteration to existing buildings and  
CAT B fit out  
Scaffold & Superstructure systems  
Site works and infrastructure  
Temporary event fit out

